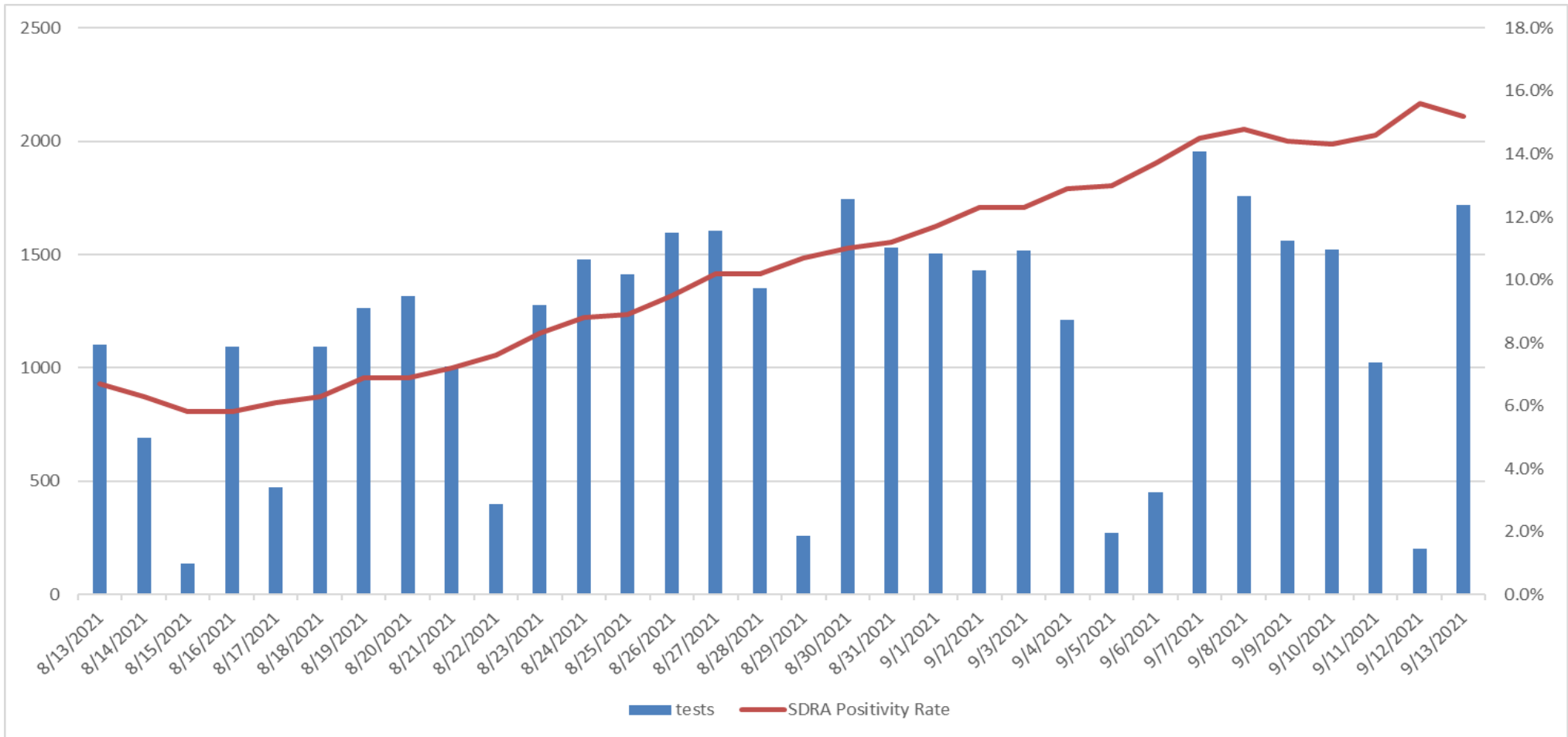




COVID-19 DATA/SURVEILLANCE 2021 UPDATE

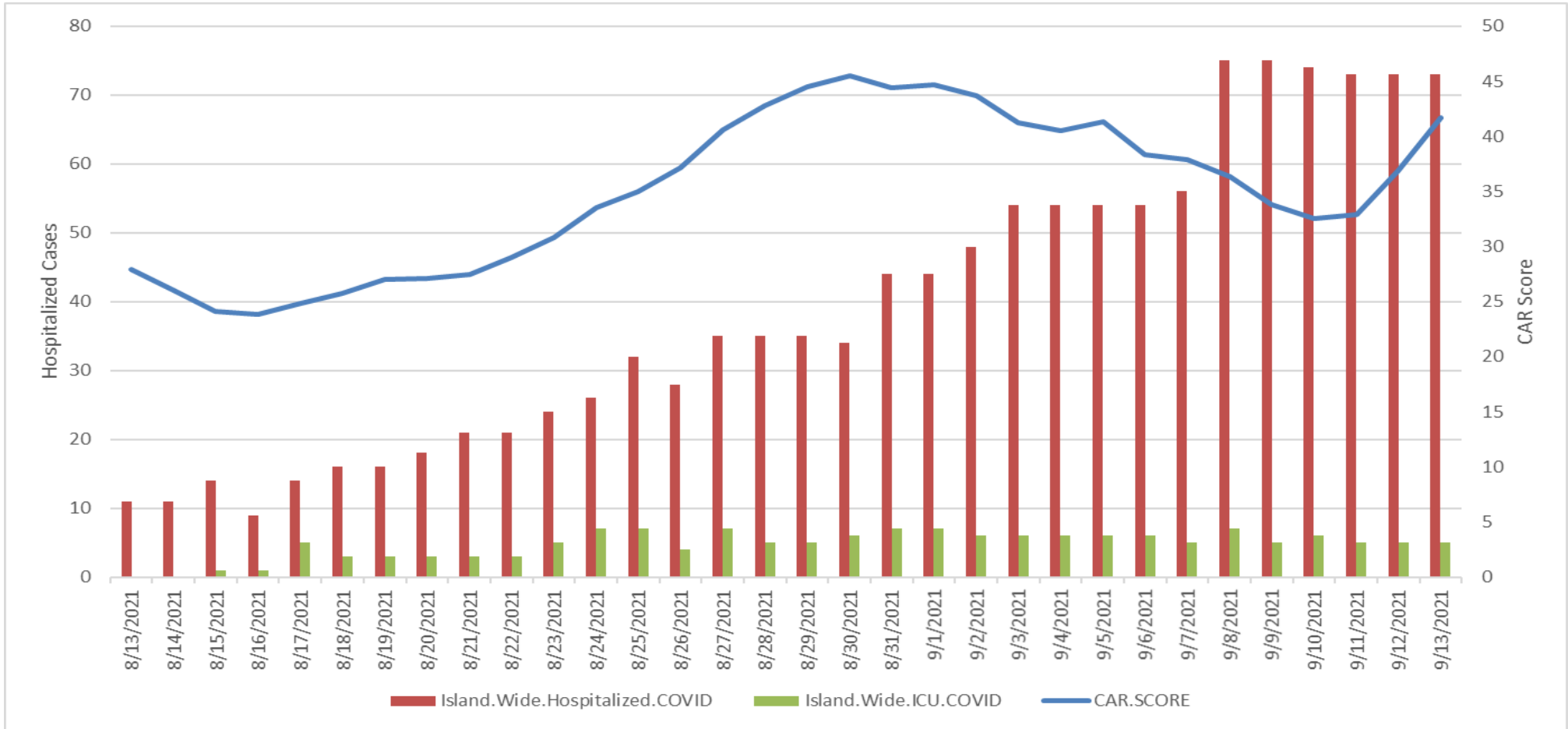
OFFICE OF EPIDEMIOLOGY AND RESEARCH & COVID-19 SURVEILLANCE UNIT
GUAM DEPARTMENT OF PUBLIC HEALTH AND SOCIAL SERVICES
9/15/2021

Data are also available on the DPHSS COVID-19 DASHBOARD for the entire pandemic 2020-2021 to date,
and trends for the past two weeks: <https://dphss.guam.gov/covid-19/>

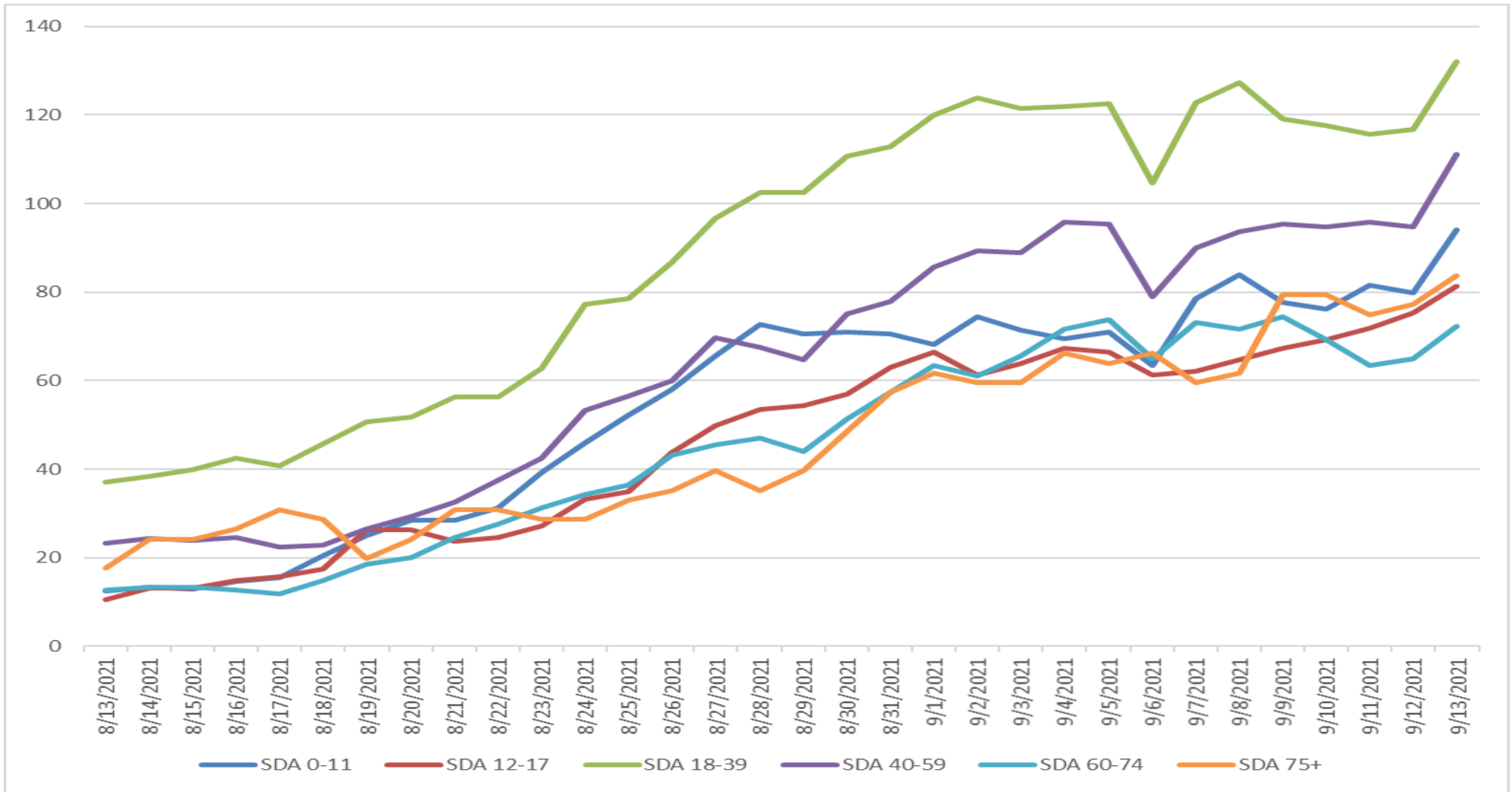


Both the Guam Public Health Laboratory (GPHL) and clinics have increased their testing capacity.

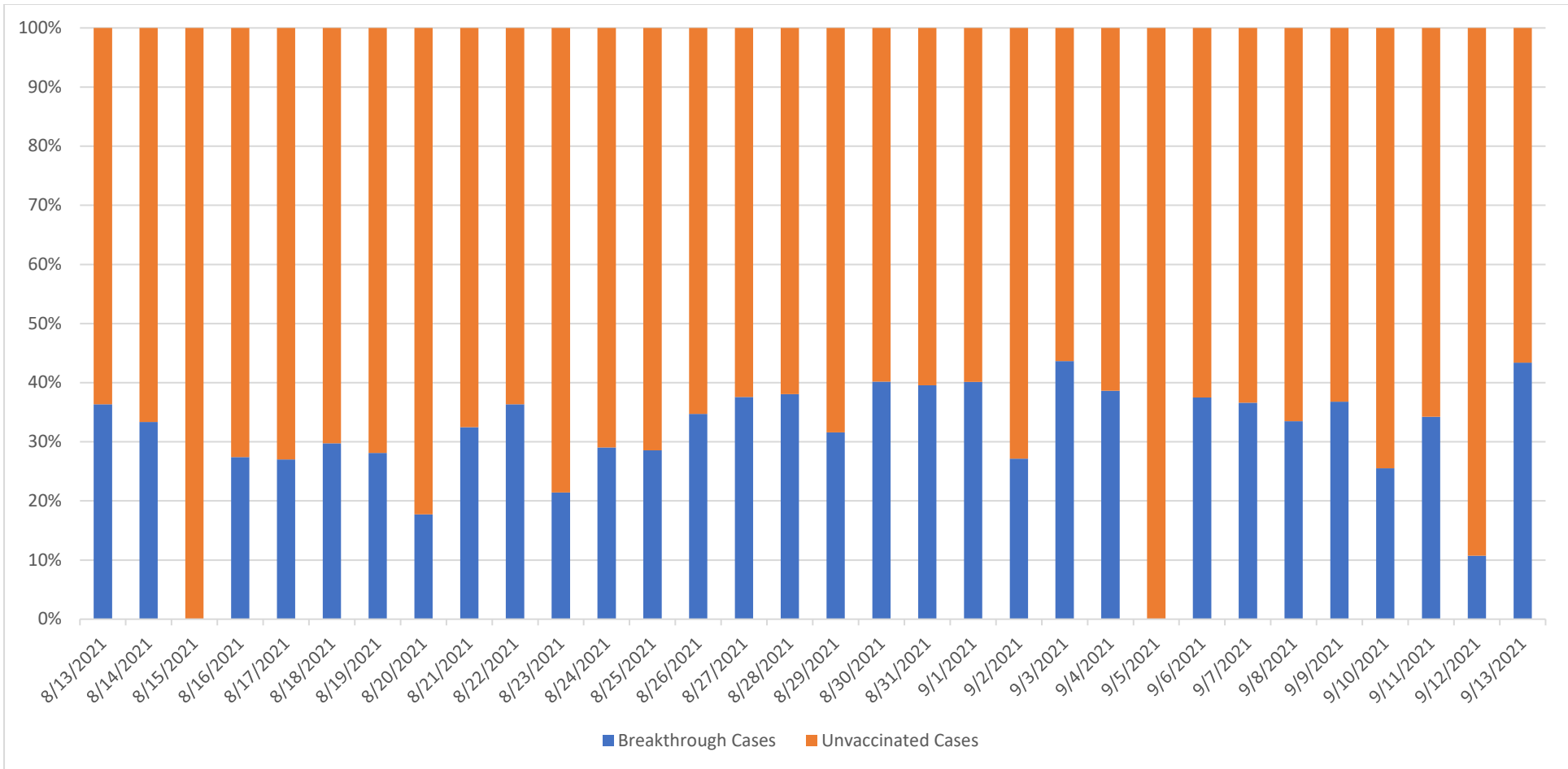
Test positivity continues to rise although we are still seeing delays in reporting of negatives.



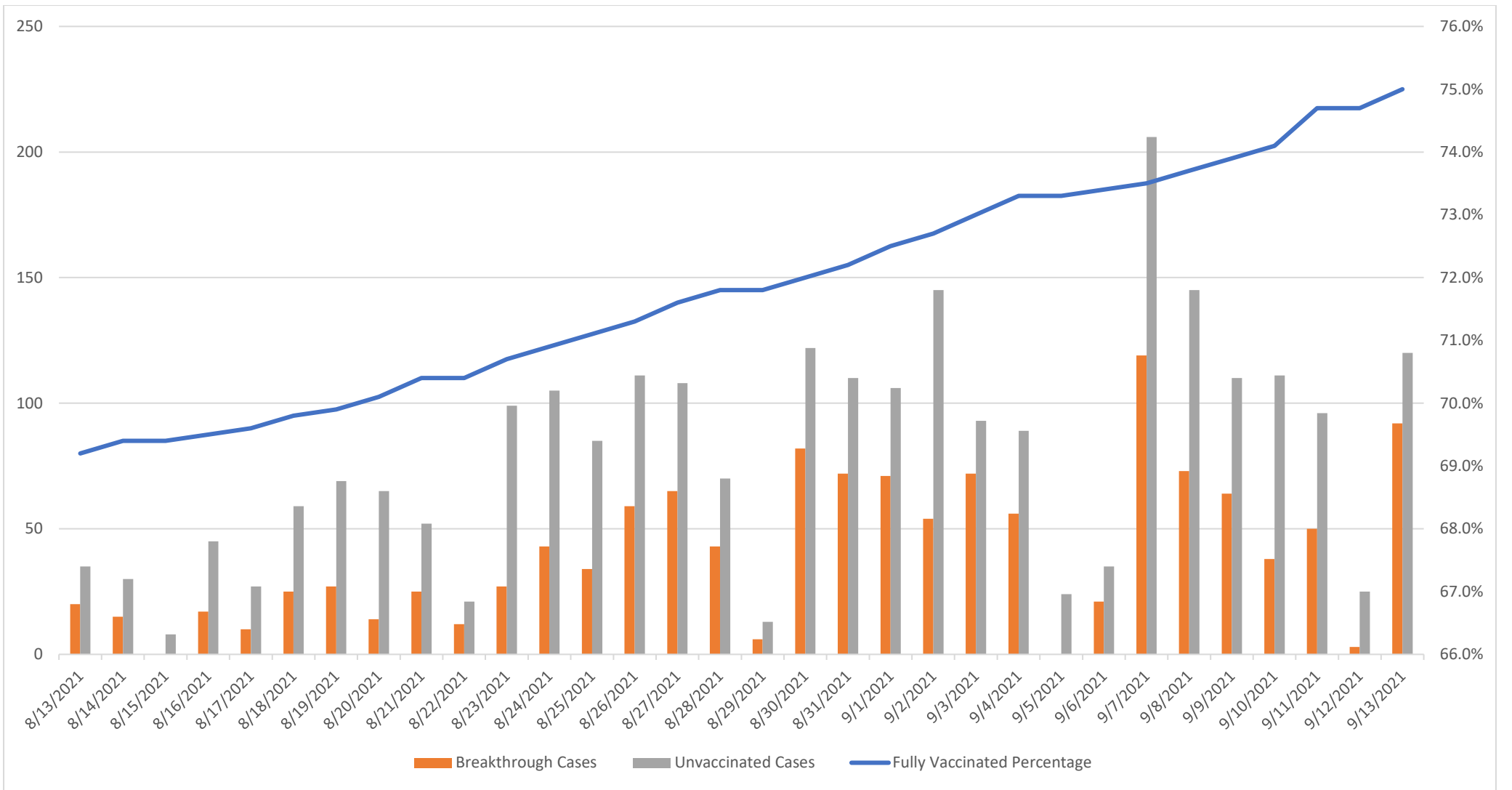
Hospitalized cases were at an all-time high at 77 last week, and this week there was a decrease in hospital cases, which could be caused by a normal 2 week lag time in trends behind cases. The CAR Score is fluctuating between 35 to 45.



The age trends to continue, except for a recent increase in the 75+ age group. The age trends are now: 18-39, 40-59, 0-11, 75+, 12-17, and 60-74.



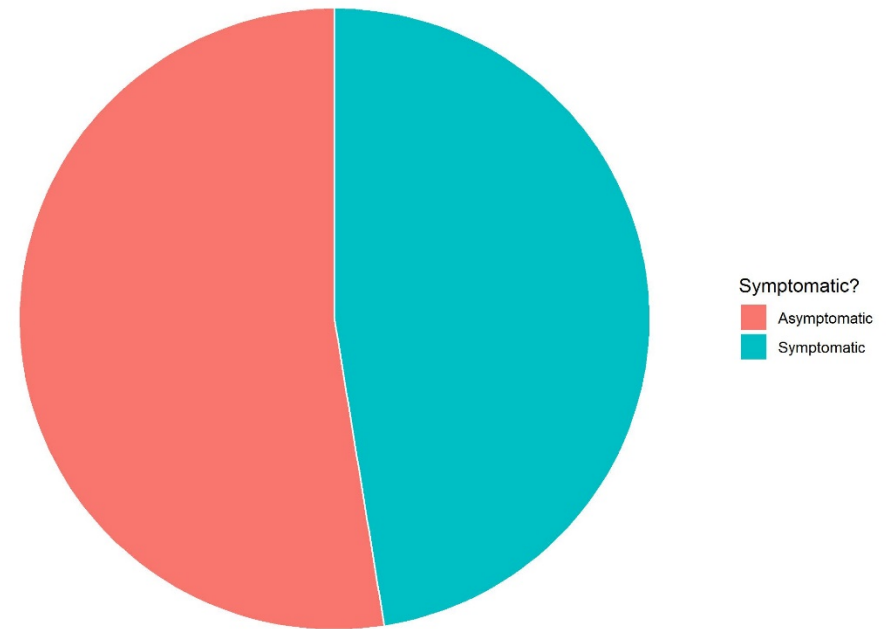
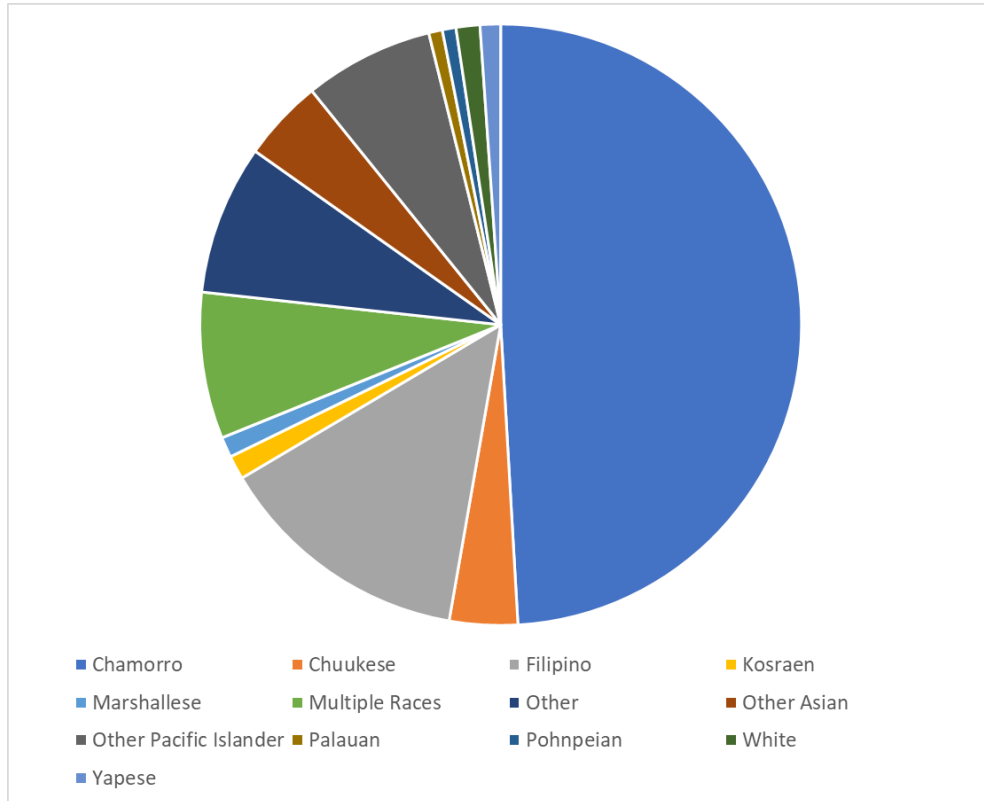
Breakthrough cases have recently increased to 37% of the daily cases on 9/13/2021. The majority are still unvaccinated cases.



COVID-19 positive cases among those ages 0-11:

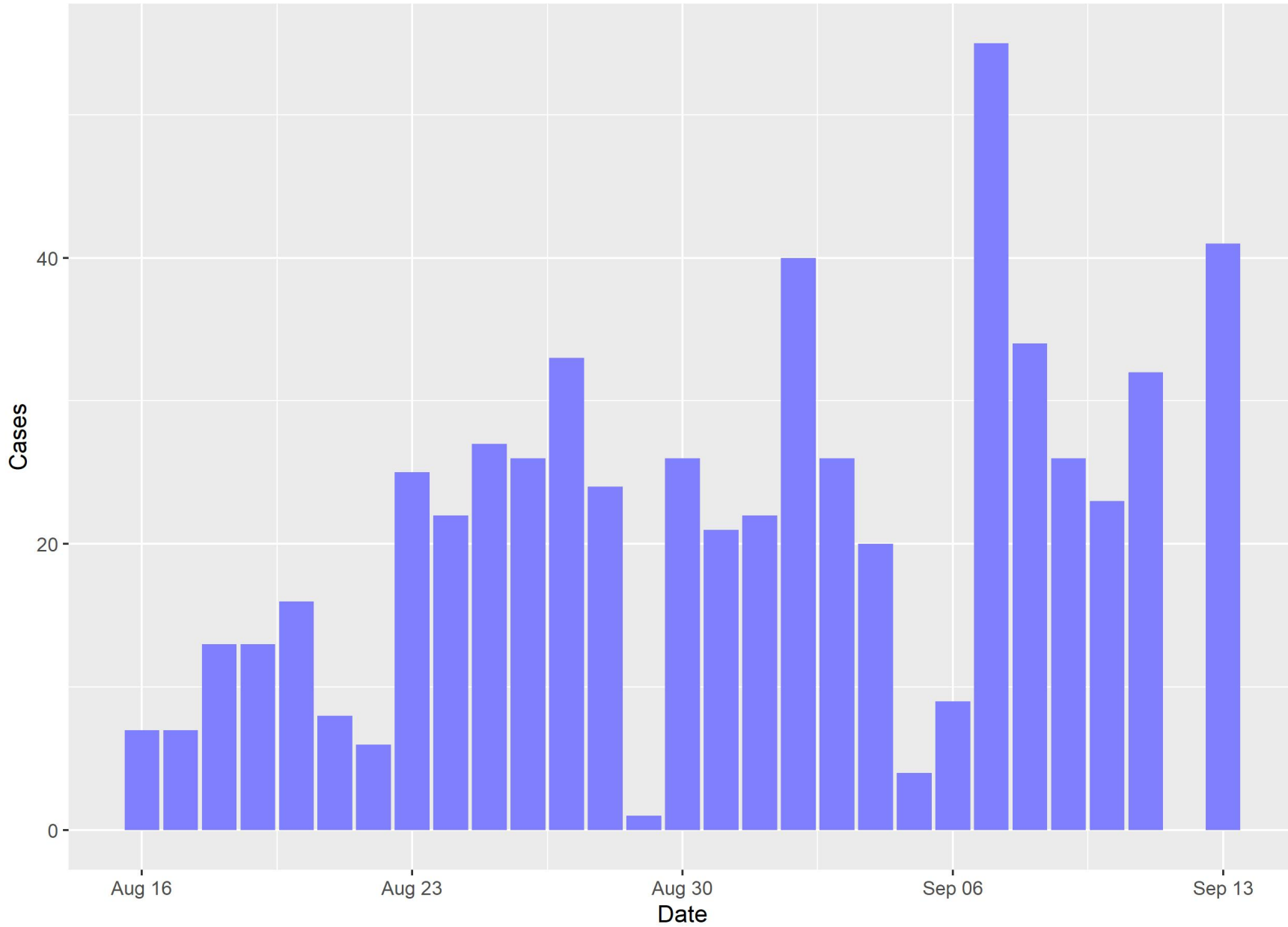
Within the last month, there have been 3,748 positive COVID-19 cases, with 607 of these cases were children ages 0-11 or 16.2%. The surge of cases among those ages 0-11 began around August 23, 2021. In mid-August this age group averaged 10 cases per day and has increased most recently to 25 cases a day. Among the cases ages 0-11 years, 194 reported being exposed in their household (32%) and 43 reported being exposed in their community (7%) respectively.

Within the age group 0-11 years, most cases continue to be Chamorro followed by Filipino (see also next page graphic) and are slightly more likely to be asymptomatic.



COVID-19 positive cases among children ages 0-11

Daily Case Count



For those ages 0-11 years, COVID-19 positive cases tend to be older children (ages 6-11):

